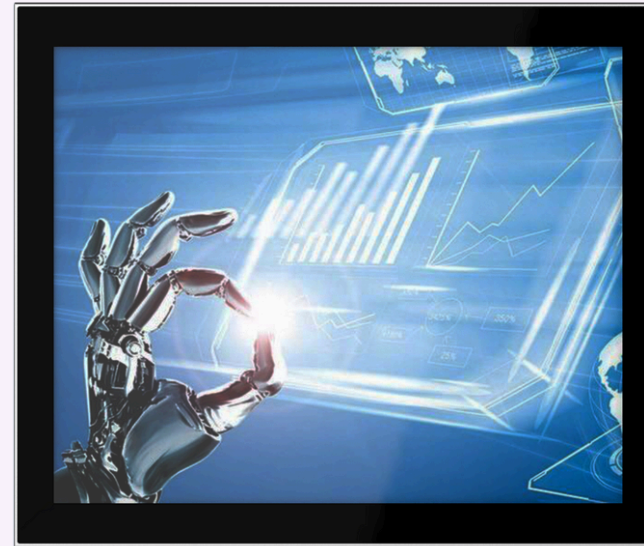




KOMODO-P-17



KEY FEATURES

- 17" Display
- i3/i5/i7 11th Gen Processor
- Panel/VESA Mounting
- Capacitive/Resistive Touch

FRONT IP 65

i3/i5/i7
11th gen

WIN 10/11
Linux,Ubuntu



SPECIFICATION

Hardware & System

BIOS

SPI AMI EEI BIOS

CPU

Intel 11th Gen. Tiger Lake UP Core i3-115G4, Core i5-1155G7, Core i7-1165G7

TDP

Default 15W (BIOS fixed)

MEMORY

2x SO-DIMM, Support DDR4 2666/2933/3200 MHz, Max. up to 64GB

STORAGE

1x M.2 2280 M-key (PCIe x4 Gen.IV NVMe) SSD, 1* 2.5" SATA SSD

GRAPHIC

Intel Iris Xe Graphics

NETWORK

1x Intel I219LM, 1x* Intel I226V LAN chips, Optional Wi-Fi +BT, 3G/4G/5G

AUDIO

On-board Realtek ACL 897 audio controller

EXPANSION

1x M.2 (NGFF) Key-B 3042/3052 slot, 1x M.2 (NGFF) Key-E 2242 slot, 1x Mini-PCIe

WATCHDOG

0-256 seconds programmable

OS

Win10, Win11, Linux, Ubuntu

IO Interface

COM

2xRS232/RS422/RS485 (BIOS configuration)

ETHERNET

2x RJ45, 10/100/1000 Mbps

AUDIO

Mic-in/Line-out (2 in 1, 3.5mm jack)

USB

2x USB3.1 Type-A (USB3.2 Gen2 x1 10 Gbps), 2x USB3.0 Type-A (USB3.2 Gen1 x1 5Gbps)

DISPLAY

1x HDMI (Max. resolution 4096x2304 @60Hz), 1x DP1.4a (Max. Resolution 7680x4320 @60Hz)

POWER

1x2 pins, phenix terminal

LCD Display

SIZE/TYPE

117.0" TFT LCD

RESOLUTION

1280 * 1024 (SXGA)

BRIGHTNESS

250 nits

BACKLIGHT & MTBF

LED backlit & 30 000hours

DISPLAY AREA

337.92 * 270.34

VIEW ANGLE

85/85/80/80

Touchscreen

TYPE

Projective capacitive / resistive touchscreen

TOUCH POINTS

Multi points touch, max. up to 10 points capacitive only

SURFACE HARDNESS

Mohs 6H

SPECIAL TREATMENT

Anti-fingerprint (AF)

Structure

STRUCTURE AND SURFACE

Magnesium-Aluminum alloy, sand blasting, anodized treatment

MOUNT METHOD

Panel mount, VESA 75/100

COOLING SYSTEM

Large area finned heat sink

OVERALL DIMENSION

386.5 * 323.5 * 57.0 (mm)

CUT-OUT DIMENSION

376 * 313 (mm)

NET WEIGHT

4.7 KG

IP PROTECTION

Front Panel IP65

Power & Environmental

OPERATING TEMPERATURE

-20~+60°C

STORAGE TEMPERATURE

-30~+80°C

RELATIVE HUMIDITY

10 ~ 95% @ 10C (non-condensation)

VIBRATION

50 ~ 500 Hz, 1.5G, 0.15mm peak to peak

SHOCK

10G/Peak (11 ms)

POWER INPUT

DC 9-36V

POWER CONSUMPTION

Around 40W

EMC

CE/FCC Class A

DIMENSIONS

