



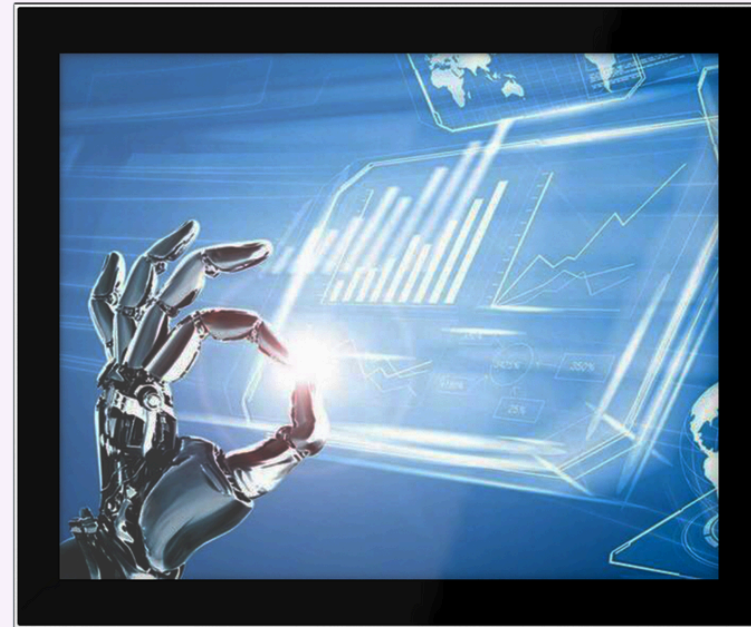
# POLECAT-170



FRONT IP65

i3/i5/i7  
11th gen

WIN 10/11



## KEY FEATURES

- 17" Display
- Intel 11th Gen Celeron i3/i5/i7
- Panel/VESA Mounting
- Projected Capacitive Touchscreen
- 5 LAN Ports, 4 support PoE



+44(0)1462 675530



sales@dsl-ltd.co.uk



www.dsl-industrialcomputing.co.uk





# SPECIFICATION

## Hardware & System

### BIOS

SPI AMI EEI BIOS

### CPU

Intel 11th Gen. Tiger Lake UP3 Celeron 6305E, Core i3-1115G4, Core i5-1135G7, Core i7-1165G7

### MEMORY

SO-DIMM, DDR4, max. up to 32GB

### STORAGE

1x M.2 2280 M-key+ 1x 2.5" SATA 3.0

### GRAPHIC

Intel UHD Graphics or Intel Iris Xe Graphics

### NETWORK

5x Intel i211AT (Optional 3G/4G/Wi-Fi)

### EXPANSION

1x Full size Mini-PCIe slot

### WATCHDOG

0-256 seconds programmable

### OS

Win10, Win11, Linux

## IO Interface

### COM

2x RS232 (Optional 1x RS485)

### ETHERNET

5x RJ45, 10/100/1000 Mbps, 4x Support PoE 802.3 AF (Single port max. up to 15.4W, total less than 45W)

### USB

4x USB3.0

### DISPLAY

1x HDMI

### POWER

1x 2 pins, phenix terminal

## LCD Display

### SIZE/TYPE

17" TFT LCD

### RESOLUTION

1280 x 1024 (SXGA)

### BRIGHTNESS

250 nits

### BACKLIGHT & MTBF

LED backlit & 30,000 hours

### DISPLAY AREA

337.92 x 270.34 (mm)

### VIEW ANGLE

85/85/85/85

## Touchscreen

### TYPE

Projective capacitive touchscreen

### TOUCH POINTS

Multi points touch, max. up to 10 points

### DURABILITY

>100 000 000 times

### SURFACE HARDNESS

Mohs 6H

### SPECIAL TREATMENT

Anti-fingerprint (AF)

## Structure

### STRUCTURE AND SURFACE

Magnesium-Aluminum alloy, sand blasting, anodized treatment

### MOUNT METHOD

Panel mount, VESA 75/100

### COOLING SYSTEM

Large area finned heat sink

### OVERALL DIMENSION

386.5 x 323.5 x 57.5 (mm)

### CUT-OUT DIMENSION

376 x 313 (mm)

### NET WEIGHT

4.7 KG

### IP PROTECTION

Front Panel IP65

## Power & Environmental

### OPERATING TEMPERATURE

0-+50°C

### STORAGE TEMPERATURE

-20-+60°C

### RELATIVE HUMIDITY

10 - 95% @ 10C (non-condensation)

### VIBRATION

50 - 500 Hz, 1.5G, 0.15mm peak to peak

### SHOCK

10G/Peak (11 ms)

### POWER INPUT

DC 9-36V

### POWER CONSUMPTION

Around 40W

### EMC

CE/FCC Class A



+44(0)1462 675530



sales@dsl-ltd.co.uk



www.dsl-industrialcomputing.co.uk



# DIMENSIONS

