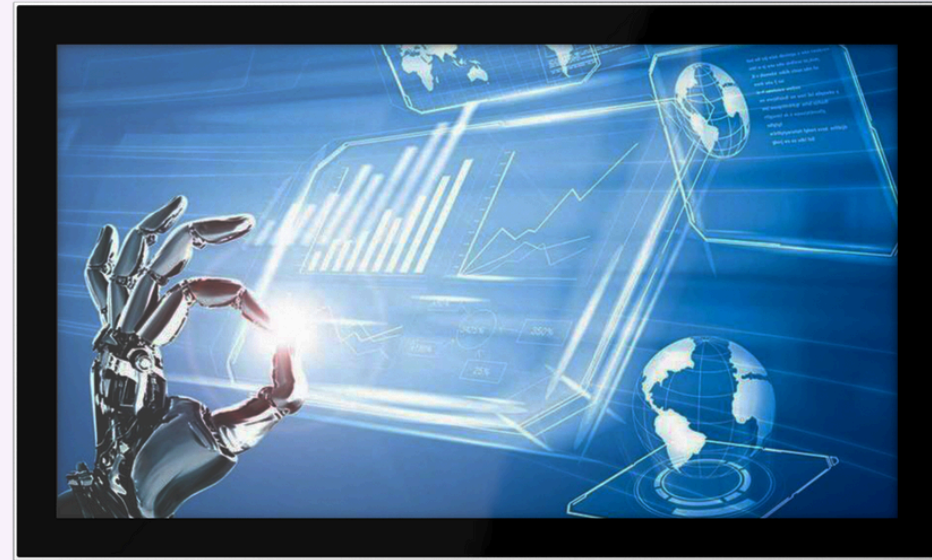




POLECAT-215



KEY FEATURES

- 21.5" Display
- Intel 11th Gen Celeron i3/i5/i7
- Panel/VESA Mounting
- Projected Capacitive Touchscreen
- 5 LAN Ports, 4 support PoE

FRONT IP65

**i3/i5/i7
11th gen**

WIN 10/11



+44(0)1462 675530



sales@dsl-ltd.co.uk



www.dsl-industrialcomputing.co.uk





SPECIFICATION

Hardware & System

BIOS

SPI AMI EEI BIOS

CPU

Intel 11th Gen. Tiger Lake UP3 Celeron 6305E, Core i3-1115G4, Core i5-1135G7, Core i7-1165G7

MEMORY

SO-DIMM, DDR4, max. up to 32GB

STORAGE

1x M.2 2280 M-key+ 1x 2.5" SATA 3.0

GRAPHIC

Intel UHD Graphics or Intel Iris Xe Graphics

NETWORK

5x Intel i211AT (Optional 3G/4G/Wi-Fi)

EXPANSION

1x Full size Mini-PCIe slot

WATCHDOG

0-256 seconds programmable

OS

Win10, Win11, Linux

IO Interface

COM

2x RS232 (Optional 1x RS485)

ETHERNET

5x RJ45, 10/100/1000 Mbps, 4x Support PoE 802.3 AF (Single port max. up to 15.4W, total less than 45W)

USB

4x USB3.0

DISPLAY

1x HDMI

POWER

1x 2 pins, phenix terminal

LCD Display

SIZE/TYPE

21.5" TFT LCD

RESOLUTION

1920 x 1080 (Full HD)

BRIGHTNESS

250 nits

BACKLIGHT & MTBF

LED backlit & 30,000 hours

DISPLAY AREA

476.64 x 268.11 (mm)

VIEW ANGLE

89/89/89/89

Touchscreen

TYPE

Projective capacitive touchscreen

TOUCH POINTS

Multi points touch, max. up to 10 points

DURABILITY

>100 000 000 times

SURFACE HARDNESS

Mohs 6H

SPECIAL TREATMENT

Anti-fingerprint (AF)

Structure

STRUCTURE AND SURFACE

Magnesium-Aluminum alloy, sand blasting, anodized treatment

MOUNT METHOD

Panel mount, VESA 75/100

COOLING SYSTEM

Large area finned heat sink

OVERALL DIMENSION

527 x 318.7 x 57.5 (mm)

CUT-OUT DIMENSION

516 x 308 (mm)

NET WEIGHT

7 KG

IP PROTECTION

Front Panel IP65

Power & Environmental

OPERATING TEMPERATURE

0-+50°C

STORAGE TEMPERATURE

-20-+60°C

RELATIVE HUMIDITY

10 - 95% @ 10C (non-condensation)

VIBRATION

50 - 500 Hz, 1.5G, 0.15mm peak to peak

SHOCK

10G/Peak (11 ms)

POWER INPUT

DC 9-36V

POWER CONSUMPTION

Around 45W

EMC

CE/FCC Class A



+44(0)1462 675530



sales@dsl-ltd.co.uk



www.dsl-industrialcomputing.co.uk



DIMENSIONS

